



GLOBAL
FIRE EQUIPMENT

DATA SHEET

I/O

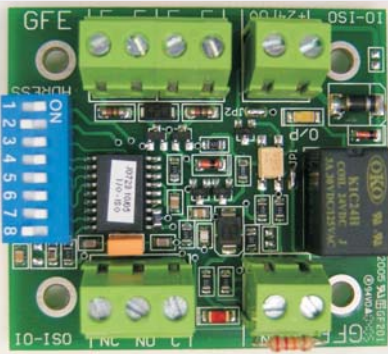
Addressable Input/Output Module

Features:

The Addressable Input/Output Module is a fully monitored device which permits the interfacing of third party equipment with the Fire Alarm Control panel using normally open dry contact connections while also providing a changeover output relay to control ancillary equipment.

The connection to the input is monitored for fault (open or short circuit) and Alarm conditions.

The output relay can be powered from the detection loop (default) or optionally by an external 24Vdc supply. Relay operation is confirmed by an onboard yellow LED.



The interface is used to monitor the contacts of an external system which must be interfaced to the Fire Alarm System, for example a Flow Switch in a sprinkler system to indicate if the sprinklers have been activated or extinguishant level monitoring in Gas Extinguishing systems etc.

The output relay can be programmed to close fire doors, activate smoke removal systems etc. The factory default setting is for the relay to receive its operating power from the Loop. Opening a link on the underside of the PCB allows the use of external power which is optically isolated from the detection loop. This option is recommended in the event that many I/O units are connected to the same Loop.

The Addressable I/O module is available as an electronic module with four fixing holes or as a boxed unit for field installation.

Resistance values: for Input

Fault - Short circuit to 2K2
or 50k to Open Circuit

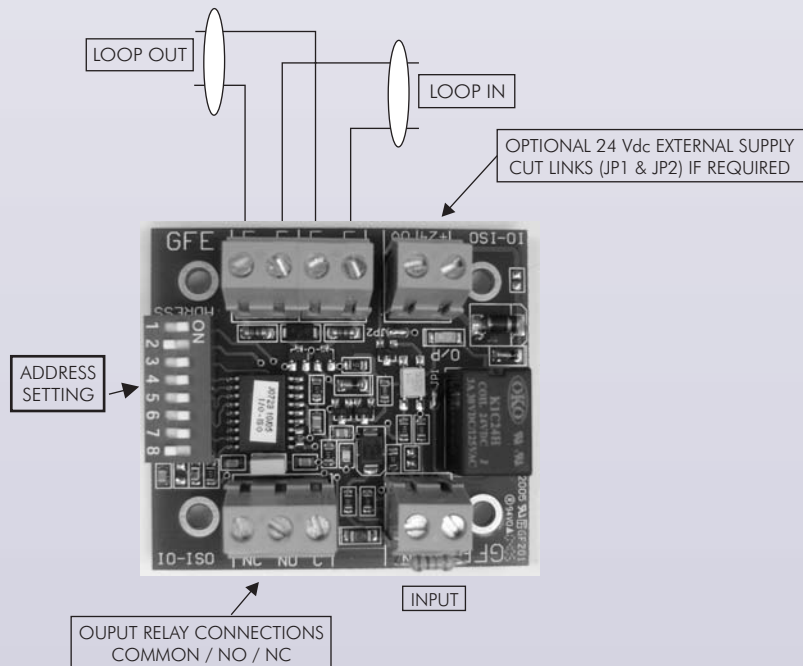
Normal - 8K2 to 50k

Fire - 2K2 to 8K2

Output Relay:

N/O or N/C

Contact rating 50Vdc,
1A Resistive Loading



SPECIFICATIONS

SUPPLY		Loop Power / 24Vdc	DIMENSIONS (UNBOXED)		57 x 52 x 15 mm
LOOP CURRENT QUIESCENT		0,7mA	WEIGHT (UNBOXED)		30 grams
LOOP CURRENT INPUT ALARM		3,1mA	OPERATING TEMPERATURE		0 - 40°C
LOOP CURRENT MAX. RELAY ACTIVE		18,1mA	STORAGE TEMPERATURE		-10 - 50°C
RELAY CONTACT RATING		50 Vdc / 1A Resistive	HUMIDITY		<85 %Rh non condensing
EXTERNAL SUPPLY VOLTAGE		24 Vdc nom	PROTECTION CATEGORY		N/A
EXTERNAL CURRENT QUIESCENT		N/A	MAX CABLE SIZE		2,5 mm ²
EXTERNAL CURRENT MAX.		3,1mA	ORDERING INFORMATION		IO-ISO