



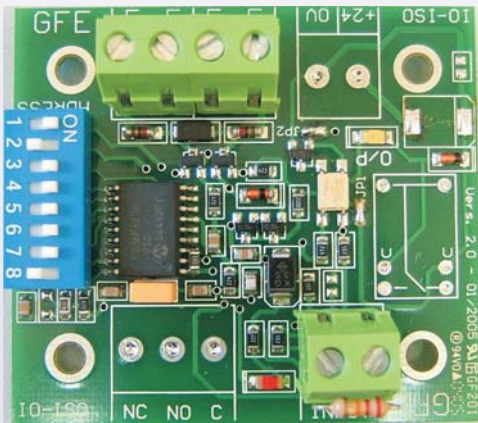
GLOBAL
FIRE EQUIPMENT

DATA SHEET

INPUT

Addressable Input Module

Features:



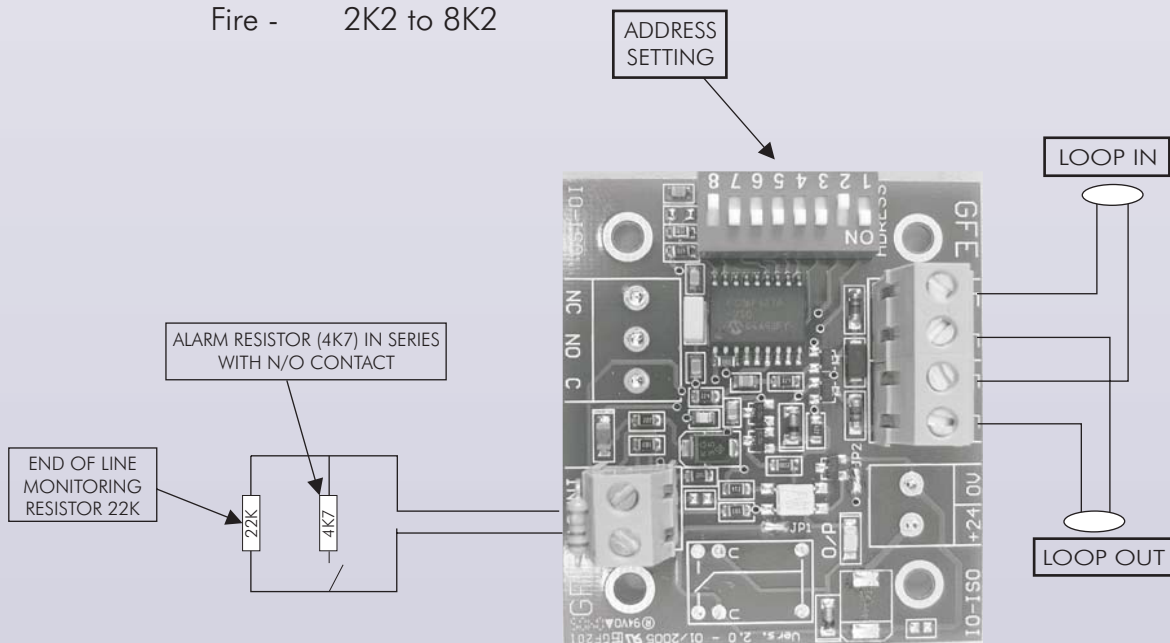
The Addressable Input Module is a fully monitored device which permits the interfacing of third party equipment with the Fire Alarm Control panel using normally open dry contact connections.

The connection to the input is monitored for fault (open or short circuit) and Alarm conditions.

The interface is used to monitor the contacts of an external system which must be interfaced to the Fire Alarm System, for example a Flow Switch in a sprinkler system to indicate if the sprinklers have been activated or extinguishant level monitoring in Gas Extinguishing systems etc.

The module is powered by the detection loop and is available as an electronic module with four fixing holes or as a boxed unit for field installation.

Resistance values Fault - Short circuit to 2K2 or 50k to Open Circuit
 Normal - 8K2 to 50k
 Fire - 2K2 to 8K2



SPECIFICATIONS			
SUPPLY	Loop Power	DIMENSIONS (UNBOXED)	50 x 45 x 20mm
LOOP CURRENT QUIESCENT	0,7mA	WEIGHT (UNBOXED)	30 grams
LOOP CURRENT MAX. (Alarm, LED illuminated)	3,1mA	OPERATING TEMPERATURE	0 - 40°C
PROTECTION CATEGORY	N/A	STORAGE TEMPERATURE	-10 - 50°C
MAX CABLE SIZE	2,5 mm ²	HUMIDITY	< 85%Rh non condensing
		ORDERING INFORMATION	INPUT