

# DATA SHEET

## ZMU

### Zone Monitoring Unit

#### Features:

The ZMU is a fully monitored interface module which is used to connect a number of current limited conventional detectors to the Global Fire Addressable control panel via the detection loop. These detectors are then seen as one address at the addressable control panel.

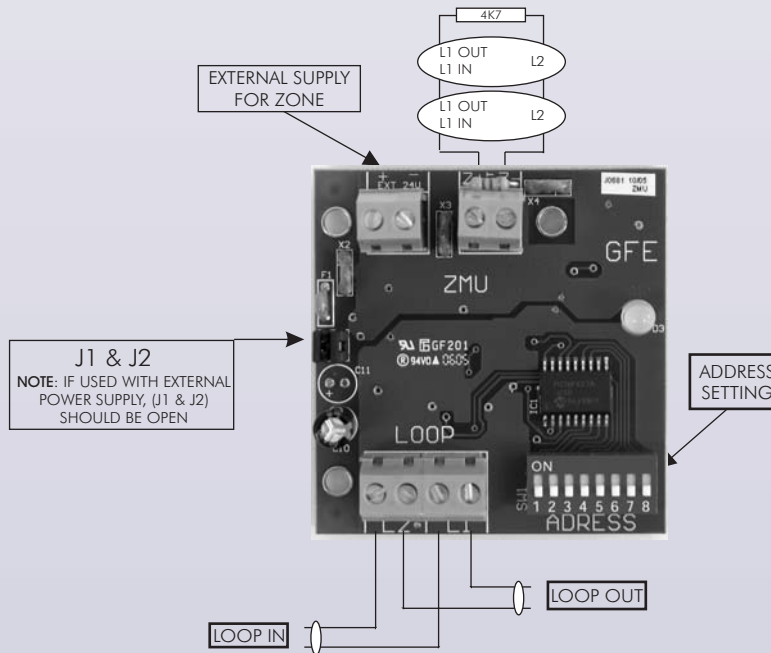


The module can be powered from the Loop or optionally by an external power supply in which case the jumpers J1 and J2 should be removed. The detector line is monitored by a 4K7 resistor. A bi-colour LED is used to signal the status of the module.

- Green Normal
- Red Alarm
- Extinguished - Fault

The external power, if used, is also monitored with the module reporting a Fault if external power is not present.

As the current drawn from the loop can be significant, particularly in Fire and Short Circuit fault conditions, the number of ZMUs that can be connected to a loop is limited to six depending on Loop load.



#### SPECIFICATIONS

SUPPLY	Loop Power / 24Vdc	DIMENSIONS (UNBOXED)	60 x 60 x 20 mm
LOOP CURRENT QUIESCENT	2,9mA	WEIGHT (UNBOXED)	30 grams
LOOP CURRENT ALARM	3,1mA	OPERATING TEMPERATURE	0 - 40°C
LOOP CURRENT FAULT - OPEN/SHORT	1,5/1,5mA	STORAGE TEMPERATURE	-10- 50°C
EXTERNAL SUPPLY VOLTAGE	24 Vdc nom	HUMIDITY	<85 %Rh non condensing
EXTERNAL CURRENT QUIESCENT	7mA	MAX CABLE SIZE	2,5 mm <sup>2</sup>
EXTERNAL CURRENT ALARM	30mA	MAX N°OF ZMU PER LOOP	Load dependent- 6 Max
EXTERNAL CURRENT FAULT - OPEN/SHORT	1,5/60mA	ORDERING INFORMATION	ZMU
ISOLATION	500 Vdc Max.		