



GLOBAL
FIRE EQUIPMENT

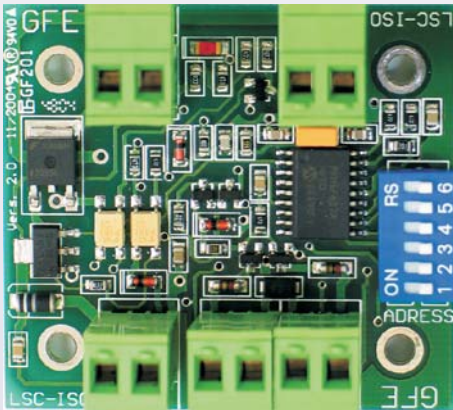
DATA SHEET

LSC-ISO

Loop Sounder Control Module (with 1Amp monitored output)

Features:

The LSC-ISO Module is a fully monitored interface which is used to connect a line of conventional sounders to the Global Fire Addressable control panel via the detection loop.



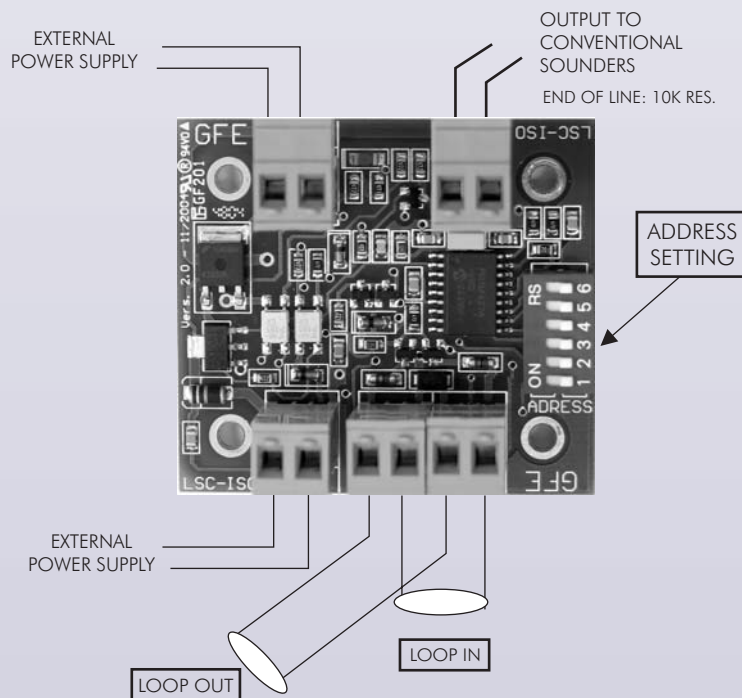
94 -125 inclusive.

The module requires an external 24 volt Dc power supply and can supply up to 1A at the sounder output which is monitored for both open and short circuit faults. A 10K ohm end of line resistor is connected to the last sounder to provide line monitoring.

The LSC-ISO uses the Global Fire proprietary sounder control protocol and therefore is only compatible with the GFE range of control panels.

The output can be programmed as pulsed or continuous. A maximum of 32 LSC-ISO can be connected to each Loop using address numbers

Also available complete with housing.



SPECIFICATIONS

SUPPLY	Loop Power	DIMENSIONS (UNBOXED)	58 x 48 x 20 mm
LOOP CURRENT QUIESCENT	1,3mA	WEIGHT (UNBOXED)	30 grams
LOOP CURRENT ALARM	1,5mA	OPERATING TEMPERATURE	0 - 40°C
EXTERNAL SUPPLY VOLTAGE	24 Vdc nom	STORAGE TEMPERATURE	-10 to +50°C
EXTERNAL CURRENT QUIESCENT	1,9mA	HUMIDITY	<85%Rh non condensing
EXTERNAL CURRENT MAX.	1A	MAX CABLE SIZE	2,5 mm ²
ISOLATION	500 Vdc Max.	ORDERING INFORMATION	LSC-ISO