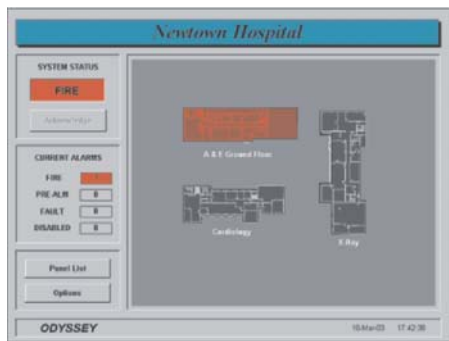




ODYSSEY

A Graphics Interface for the 21st Century

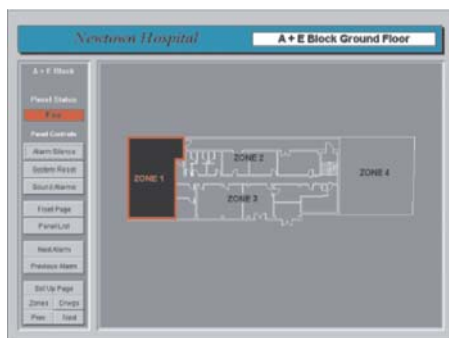


Initial alarm screen showing general area

The Odyssey Graphics Display and Alarm Management System allows the connection of up to 64 Juno-NET fire alarm panels to a PC. Each panel can be displayed on the screen as if the operator were standing in front of it, and can be fully controlled from the computer.

Odyssey is simple to set up and operate. Programming is password protected. Once in programming mode, each panel in the system can be enabled, and drawings can easily be imported from a graphics program such as Autocad®.

Detectors and Call Points etc. are then added graphically via the built-in interface there are no complicated tables to set up. Device descriptions are received directly from the Juno- Net control panel.



Second zoom screen showing zone in alarm

In the event of an alarm or fault, the location of the incident will be displayed on the computer screen, with three levels of zoom available to the operator.

The individual device can be viewed and interrogated, and if necessary disabled.

A printer can be connected to the computer to record all alarm, fault and programming activity on the system.

Whether or not a printer is connected, a log is kept of all events. This log can be periodically downloaded and printed if required.

Other utilities are provided, such as a list of emergency phone numbers, and an operator notepad.



Highest zoom showing detector in alarm

If a second computer is required at another location, this can be connected as a slave via an Ethernet network to the main computer. For longer distances, Fibre Optic cabling can be used. TCP/IP communications can also be used to allow remote access.

Odyssey is available in several language versions including English, Spanish, Italian and Portuguese.

For remote monitoring and/or control Odyssey-Telemon is available. This non-graphics version of Odyssey allows a dial-up connection to be made from a desktop or laptop PC to a system via the public telephone network.

In an alarm condition, the panel will also dial up the computer and allow the operator to view and control the panel.